



#interior_by_toob_design

PORTFOLIO

CONTENT

ABOUT US

OUR PROCESS

OUR PROJECTS

HOSPITALITY

OFFICE SPACE

BARS & RESTURANT

RESIDENTIAL





TOOB Design is owned and directed by **Apsara Agampodi & Praneeth Samarasekara**. With more than 10 years in the business in creating an inviting environment for your home, Hotel, Retail or office

TOOB Design offers a large range of services from full room makeovers to designing condominium interiors. The team is experts in custom furniture design, space planning, CAD drawings, window coverings, color consultations and accessorizing.

Consultants with TOOB Design are known to be the best listeners in the business. Our team prides itself on collaborating with our clients to channel their vision. Whether you need a few hours of our time or to have us generate a project's full scope of design, we are always up for the challenge. Intimate Interior's practices sustainability and focuses on working with what you already own whenever possible. We pride ourselves on offering our clients multiple solutions for their design problems.

Our Process

From the first meeting to grand opening we're there with you every step of the way.

No matter how simple or complex the project, we will work closely and enthusiastically with you to achieve success. We bring all members of the resource team to the table including contractors and sub-trades, equipment suppliers, graphic designers, advertising firms and etc.. We will be coordinating financial planning, development and risk assessment!) Although the steps may vary, our objectives remain the same: **creating themes to realize dreams.**

Budget considerations are always paramount, and services are always discussed prior to job commencement, outlining responsibilities, mandates, restrictions, and schedules. Our design fees are a small part of your overall investment, but design package is a large part of your overall success.

Our process is carried out in five distinct phases:

- Concept development and Presentation.
- Working Drawings and Documents
- Site Visits and reporting
- Décor Purchasing
- Installation and Opening



RESIDENTIAL

SHANGRILLA APARTMENT SRILANKA
SUNFLOWER APARTMENT -WALLAWATTA
DICKMONS COURT APARTMENT-HAVELOCK
TOWN
BLUEOCEAN APARTMENT

SINGAPORE APRATMENT JURONG EAST
AUSTRALIA – RESIDENT CRAGIBURN

RETAIL|BAR | CAFÉ

FASHION BUG | KOLPITY | RAJAGIRIYA |
NEGOMBO | MATARA | RATHNAPURA
COTTON COLLECTION | HQ
CITY FASHIONS – WENNAPUWA

THE CLOSEOUT
PHNOM PENH

HOSPITALITY

CENTARA CEYSAND - ALUTHGAMA
LAKE WIND THISSAMAHARAMA
GREEN WIND SIGIRIYA
HIKKADUWA BEACH HOTEL
HOTEL WASALA LEISURE –ANURADHAPURA
SLIGHTLY CHILLED CAFÉ –KANDY
CHOCOLATE ROOM – COLOMBO 07
RTS CAFÉ – RATHNAPURA
SAFFRON CAFÉ – COLOMBO
CAKES AND BAKES - KOLLPILTY

OFFICE

AVIVA NDB
STAR GARMENTS
BRANDIX CASUAL WEAR RATMALANA
BERNARDS BOTHEJU AND COMPANY
MINISTRY OF HEALTH SRI LANKA
HEMAS HOLDINGS PLC
LANKEM CEYLON LIMITED
ANTI MALARIA CAMPAIGN
SHEFFIELD ENGLISH COLLAGE-GAMPAHA
EPIC LANKA TECHNOLOGIES
PERPETUAL TREASURIES LIMITED
INDOCHINE APPERALS – PHNOM PENH

RESIDENTIAL

LOCATION
MELBOURNE
| AUSTRALIA

INVESTMENT
AUD 35000

SPACE
RESIDENTIAL

MELBOURNE



A family with one child (The princess) wanted to make their dream home in Australia . We were lucky to make all of their dreams comes true .

The princess holds her ground against pink(not to use in any form) as all the princess were wearing other colors ex: sleeping beauty – yellow , snow white – blue , elza – blue. TOOB is so happy to create above room for that lovely little princess and had her with tears when we reveled her room.



Earthy colors with very blending selection. not to priorities anything . The interior has been design in away that is can hold the warmth in the cold climate and the cooling effect in the very hot climate .

LOCATION

MELBOURNE
| AUSTRALIA

INVESTMENT

AUD 45000

SPACE

RESIDENTIAL

MELBOURNE



A family of four was looking to build their dream home a reality.

Due to the financial circumstances they wanted us to make their media room and the main living room only.



Client was keen on using some gold elements as a luxury touch but against the show off. We were able to create the perfect balance between the thoughts...!! .

LOCATION
SINGAPORE

INVESTMENT
SG\$ 60000

SPACE
RESIDENTIAL

SINGAPORE



Very busy husband and wife with two adorable children in Singapore purchased a HBD house without window in living hall and used artificial lighting even in day light. And TOOB were called upon to make a livable space yet we created not just a livable but happy and vibrant house for them.

Lots and lots of colors are used and we make the store room look like the main feature of the storage area with hidden doors and best entrance feature.



Contact 0773608237

SMART LIVING



LOCATION
Singapore

INVESTMENT
SS 43000

SPACE
RESIDENTIAL

LOCATION
Singapore

INVESTMENT
SS 23000

SPACE
RESIDENTIAL

Modern colorful
Scandinavian design for
a brighter and lighter
atmosphere..



RESIDENTIAL



LOCATION
ANURADHAPURA

INVESTMENT
US 19000

SPACE
RESIDENTIAL



SMART LIVING



11

Modern Scandinavian design done for a young client .

Grey themed décor with clean and neat lines.



LOCATION
Woodlands
Singapore

INVESTMENT
SS 119000

SPACE
RESIDENTIAL

12

LOCATION
SHANGRILLA

INVESTMENT
US 10000

SPACE
RESIDENTIAL

SHANGRILLA



Located in the heart of Colombo overlooking the magnificent Indian ocean and Colombo harbor.

Perfect for the modern family , this urban apartment looks stunning with the right balance of comfort and Order. The living room and dining area has an extraordinary design, with clean lines , natural lights and a neutral palate. The entire area carries the blues and shades of the sea and sky . The full length windows draw in the blazing sunlight , highlighting the statement sandy fabric comfy sofa and giving the wooden floors a beautiful sheen.



The perfect balance of light and shades .

The indoor colors' complement the sky and outdoor recreating the same theme.

The carpets and wall hangers are personally crafted to replicate the sea sand and the coral reef just below this apartment. The rope element of the coffee table décor tied everything together and given it a new level with cement fish on the side.



LOCATION
SHANGRILLA

INVESTMENT
US 30000

SPACE
RESIDENTIAL

SHANGRILLA



Located in the heart of Colombo overlooking the magnificent Indian Ocean and Colombo harbour.

This electric apartment was owned by a young couple who are fans of electric music and the husband was a music composer. Both loved black, and were in love with more bold elements.



The perfect balance of light and shades.

The indoor colours' complement the sky and the outdoor recreates the same theme.

The carpets and wall hangers are personally crafted to replicate the ideology of the owners. The silver coffee table and the hanging lamps tied everything together with a statement.



LOCATION

United Kingdom

INVESTMENT

SPACE

RESIDENTIAL -
Holiday Home

E DESIGN



Incorporating deep colours is an art that adds richness and sophistication to any interior. Finding the perfect balance of pairing deep hues with elegant touches brings a sense of opulence and timelessness to the design. The interplay of textures, materials, and lighting is meticulously curated to enhance the overall ambience.



LOCATION

DICKMONS
COURT

INVESTMENT

US 15000

SPACE

RESIDENTIAL

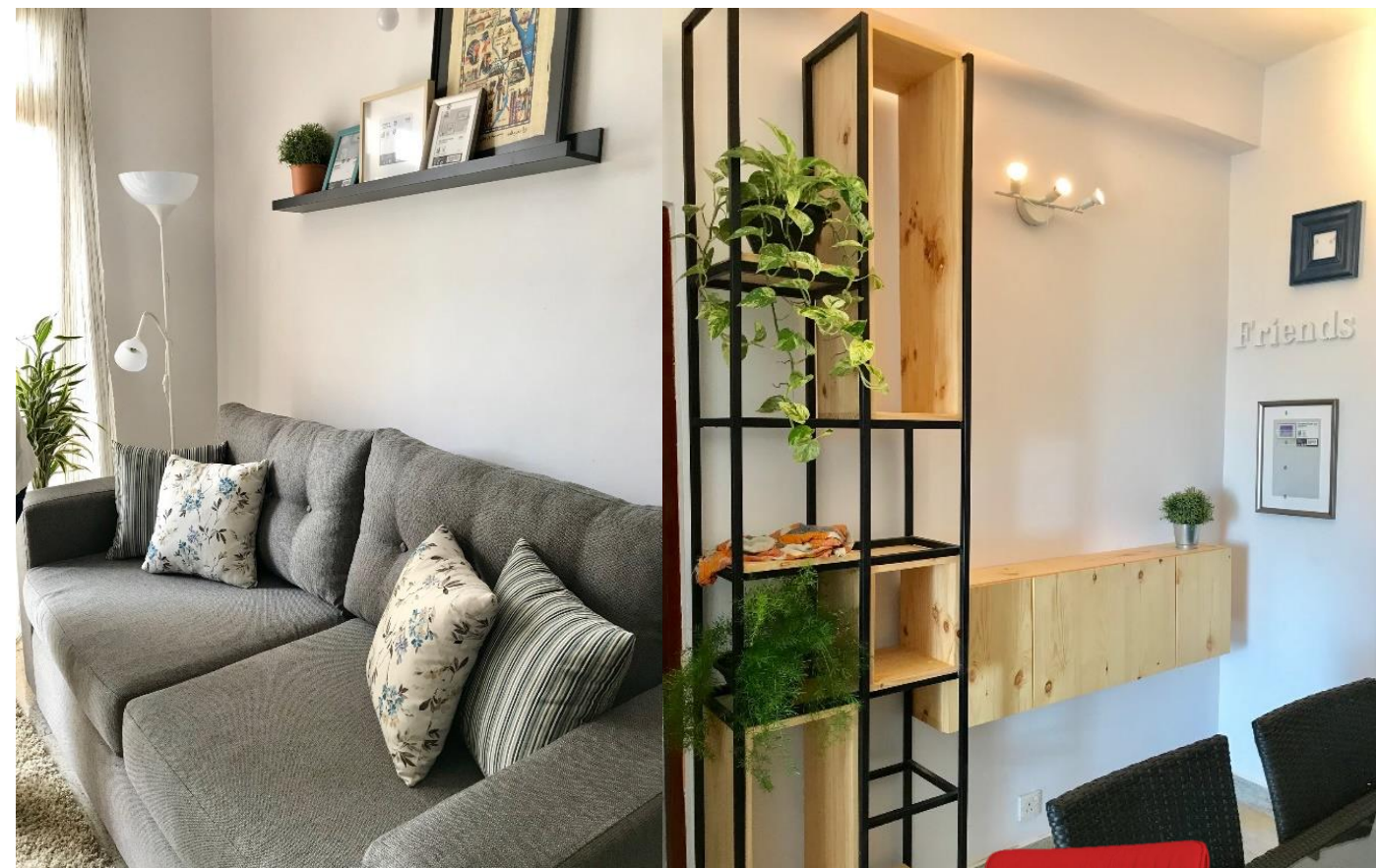
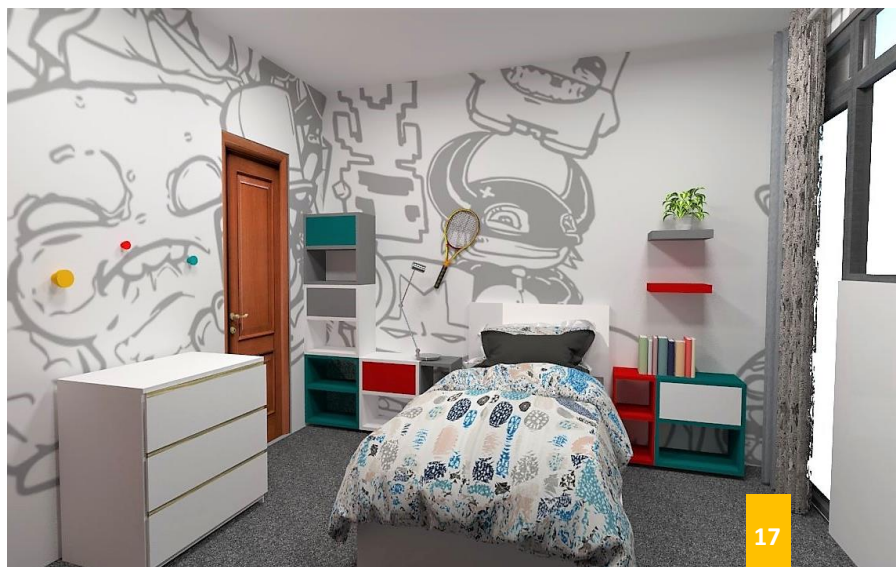
SMART LIVING

800 sqft

RESIDENTIAL



A smart living space created with Scandinavian minimalistic theme. The ergonomics has played a huge roll when designing this personal space as it has only 130 Sqft for living area and TOOB did a very successful project leaving a Happy client.



MADE IN ITALY



THE KITCHEN THAT YOU ALWAYS WANTED



HOSPITALITY



/casamia

CALL + 94 773 586 106

LOCATION

Anuradhapura

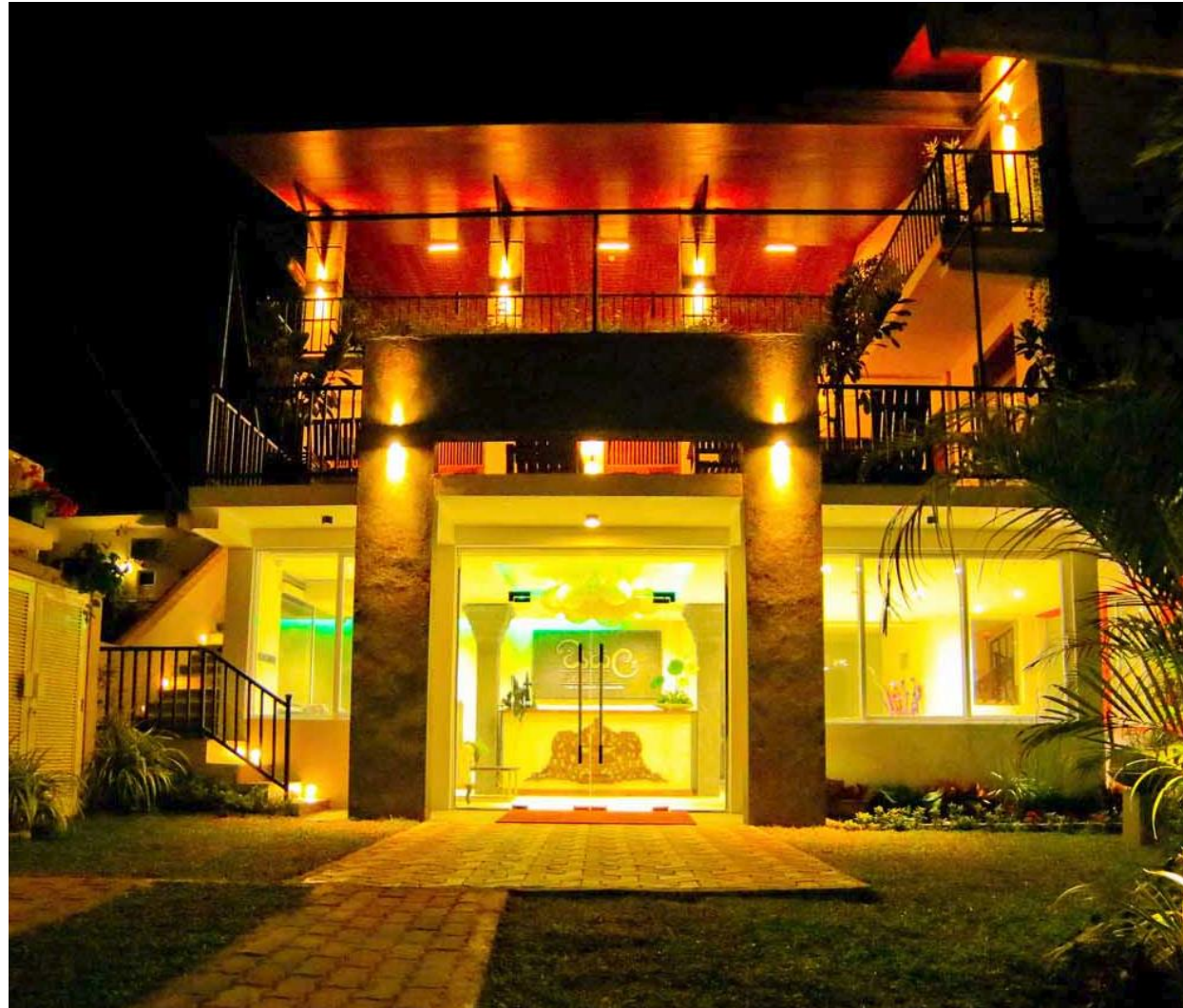
INVESTMENT

\$32,000

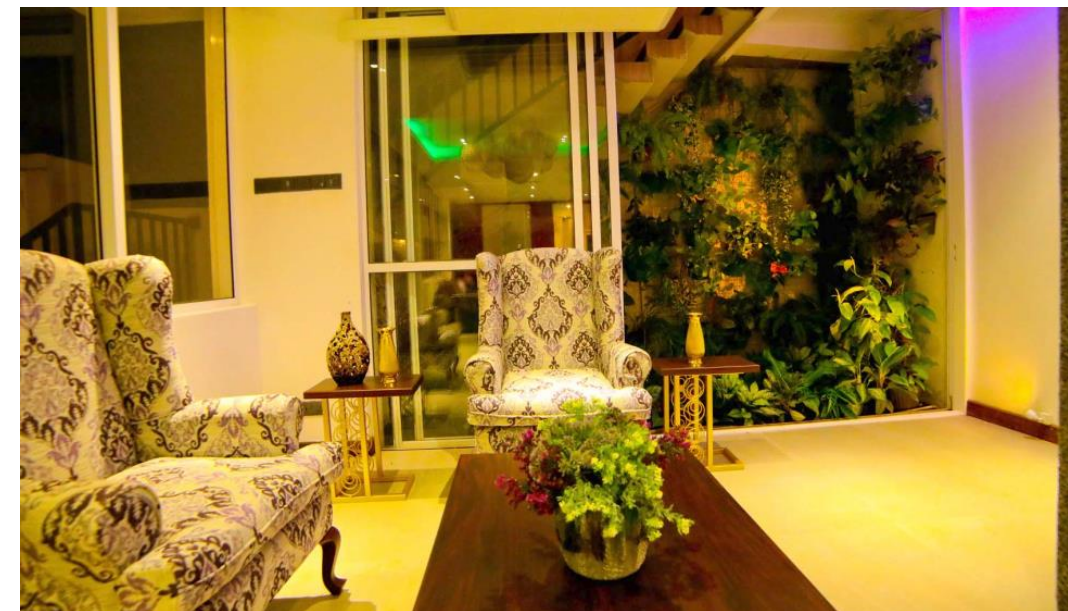
SPACE

25000 Sqft

WASALA LESUIRE



Anuradhapura is one of the most scared city of Sri Lanka. Most of the tourist are aware of only few ruins and main monuments . We have used our wall spaces to give more and more details about Anuradhapura so the visitors would make most out of their stay and it's a plus tours for the hotel itself.



HOTEL
IN ANURADHAPURA

The client has converted his house in to a lodging place and needed a kind of homely feeling when someone enter the hotel. The character of this house is a collector of items .he didn't want us to make a one single theme and according to him it looks BORING!!!! Instead he wanted us to create a place where he can show all his collectable yet has an elegant atmosphere.

WASALA LESUIRE

LOCATION

Sigiriya

INVESTMENT

\$300,000

SPACE

35000sqft

GREEN WIND HOTEL



Villas in Sigiriya

Sigiriya is famous for its own royal rock as a tourist spot . This idea was to make single villa type accommodations for people to stay for long time . Each villa contains a plunge pool , outdoor private garden and studio apartment amenities .



VILLA LAYOUT

The bird's eye view off the villa. In this special open concept villa , one can take a break from indoor comforts to catch an occasional breather and fresh air with just a few steps.. This enables better ventilation for the whole area – where you can step out to take a peaceful stroll any time.

GREEN WIND HOTEL

LOCATION

Tissamaharama

INVESTMENT

\$250000

SPACE

20 Rooms

LAKE WIND HOTEL



HOTEL IN THISSAMAHARAMA

The Lake Wind Resort is located at a picturesque setting which overlooks the stunning surroundings of the magnificent Tissa Lake. We have managed to get the lake view for all the rooms.

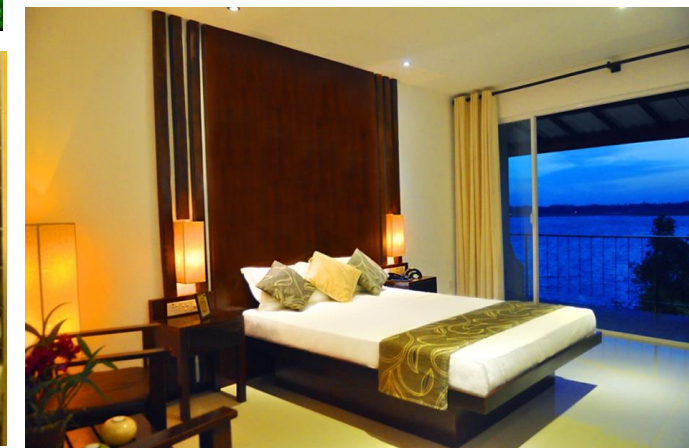


LAKE WIND HOTEL

THE LAKEWIND RESORT

The main target was to keeping up the budget . This hotel was listed in cheap satays but had very good reviews on trip advisor and also the owner didn't want to spend lot of the refurbishment.

We have used a wood look by substituting with veneer for bigger panels, and created a peaceful outdoor setting for each and every room . .



LOCATION

Hikkaduwa

INVESTMENT

\$30000

SPACE

Reception &
Deluxe rooms

HIKKADUWA HOTEL



The base of the lampshade to be covered with a fishing net.

A huge love seat is given for the room. back of the bed, the whole wall is going to be 3d waves as in ocean.



OFFICE SPACE

LOCATION

BRANDIX
CASUAL
WEAR

INVESTMENT

\$20000

SPACE

ADMINISTRATION
& RECEPTION



BRANDIX



The reception is the face of the company. We have created a beautiful and very positive feeling at the Brandix reception area for clients to have a very good first impression.

Brandix is a company who is not only focusing on their cash profits but also works towards sustainability and thinks twice on future generations. We have taken this interior as a mirror for their image.

All the materials used are environmentally friendly. The tables were done with recycled railway sleepers, the steel rods are from a removed yard. And the seating of the lunch area are the left over corner cuts of wood.

Contact 0773608237



LOCATION

Star Garment

INVESTMENT

\$32000

SPACE

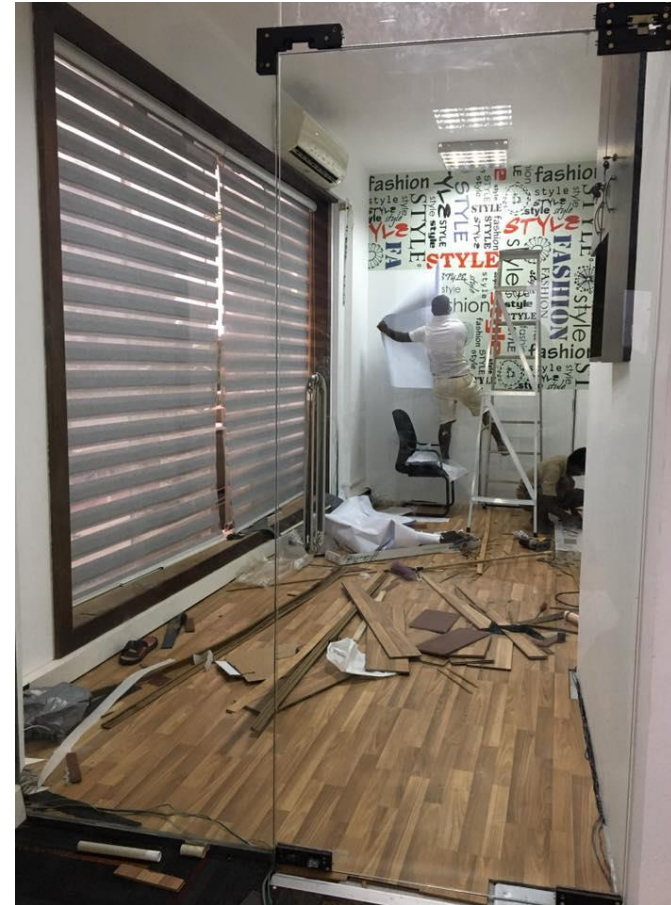
Buying house

STAR GARMENT



The challenge was thrown to TOOB to transform a traditional work office with sky-high filling and document to an open, lively and dynamic office space without taking off any of the document out of the work place. With minimal space.

STAR
A Komar company



A work Space

We have designed a table with its own built in drawer (high) where it can hold up-to 200 files at a time. Used yellow and grey colour scheme to make sure it has a lot of vibrant feel even though there was minimum day light coming in.



STAR GARMENT

LOCATION
ST BENEDICTS

INVESTMENT
\$ 25 600

SPACE
ADMINISTRATION

A huge transformation took in place when we started this government office into a elegant work place. From a dingy black and caved atmosphere to this....

St BENEDICTS COLLAGE



ADMINISTRATION OFFICE

Lighter and Powerful ... the space itself creates more powerful and energetic atmosphere toward the workers to start the day with a smile.

All the wood colors changed to light colors and also add lots and lots of green to have a better indoor air quality.



LOCATION
INDOCHINE APPREAL
CAMBODIA

INVESTMENT
\$85000

SPACE
RECEPTION &
BUYING HOUSE

INDOCHINE APPREAL



A huge transformation took in place when we started this government office into a elegant work place. From a dingy black and caved atmosphere to this.



LOCATION

NESTLE SRILANKA

INVESTMENT

\$35000

SPACE

PROPOSED DESIGN

NESTLE LANKA



Nestle

A formal office area with minimal separation partitions yet need to recreate personal space for the workers.



Nestle

We had to keep in mind that nestle is mainly a food company where they value nutrition's and human eating patterns. So we managed our self not to use any of the colors which believes poisonous in various believing.

LOCATION

AVIVA NDB

INVESTMENT

\$20000

SPACE

RECEPTION AREA



AVIVA NDB
INSURANCE

BAR | CAFÉ & RETAIL

LOCATION
CHOCOLATEROOM

INVESTMENT
\$55000

SPACE
CAFÉ | LAUNGE

CHOCOLATE ROOM



The interior of the Chocolate Room is mostly done in dark, earthy colors. Wooden chairs provide an element of warmth, encouraging an air of coziness, while the seats are upholstered in glossy colors, suggesting informality, since matte finishes are more sophisticated. The comfortable, yet stylish chairs encourage you to stay, relax and indulge. An interesting textural aspect has been added with the 3D chocolate wall. Outside the showroom one of the walls has been molded to resemble hard chocolate, but this effect changes once you enter the comfort The Chocolate Room TOOB Design showroom, with the wall taking on the ripple effect of melted chocolate - reminding you subconsciously of delicious decadence.



*"A warm,
cosy lounge
where
people can
indulge
themselves"*



LOCATION

SAFFRON

INVESTMENT

\$15000

SPACE

CAFÉ | LAUNGE

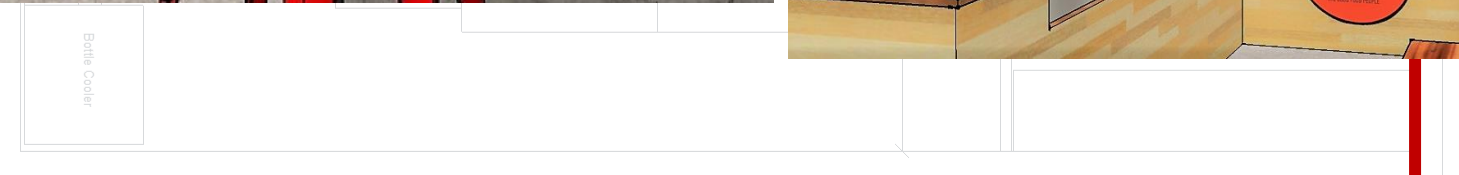
SAFFRON CAFÉ



FOOD OUTLET

A narrow space were given to TOOB to create up class yet traditional food outlet with provision provided to have a quick lunch inside the shop . The outlet is serving Sri Lankan traditional food with no preservatives or food enhancers used. And also prepared with the most traditional way with wood fire stove.

Located in Colombo 07.



To bring back old memories . Where we had our mom made rice and curry and actually enjoyed our meal.

The Interior is done in a way that suits the busy and so called up market clients with urban and very modern style but keeping in mind to touch the deep end of memories they had with old coconut shell spoons , drift wood and kind of a moody environment where you feel like you are entering to a modern country kitchen .

We had the sustainability in our culture . So this will be a exhibit unit with environment friendly materials.

LOCATION
FASHIONBUG

INVESTMENT
\$45000

SPACE
RETAIL

FASHION BUG



Our goal was to create the brand identity as well as making a shop within the shop in fashion bug.

Used dark colors and very hard materials to emphasize the masculine effect of this gents area. Unfinished wood panels , open black ceiling with exposed ducts and pipes and wiring layouts. Mood lighting and specially designed racks has made the perfect ambiance

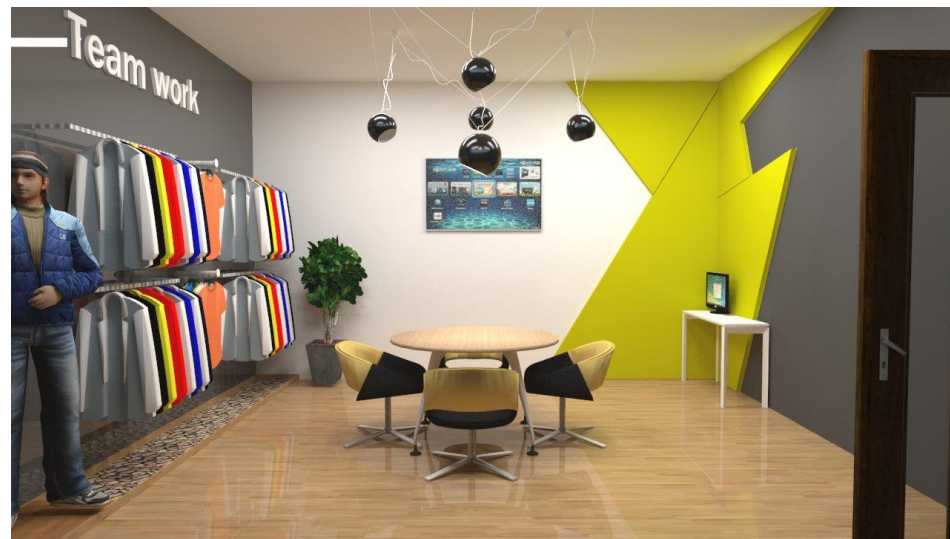


LOCATION
BERNARDS-
KOHUWALA

INVESTMENT
\$30000

SPACE
DESIGN CONCEPT

CONCEPT DESIGN



Contact 0773608237



NYBODA
Sofabord vendbar bordplade,
75x60x50 cm
349,- /stk.
Findes i flere farver / størrelser



STOCKHOLM 2017
Tæppe, fladævet, 170x240 cm
1.399,- /stk.



TUVALIE
Plaid, 120x180 cm
89,- /stk.



AINA
Møtervare, 150 cm
49,- /meter



STOCKHOLM 2017
Bordlampe
299,- /stk. **A++**
Produktdatablad



ANTIFONI
Gulv-/læselampe
299,- /stk. **A+**
Produktdatablad



IKEA PS 2014
Loftlampe, 52 cm
799,- /stk. **A++**
Produktdatablad
Findes i flere farver / størrelser



BESTÅ
Kasse, 25x31x15 cm
79,- /stk.

We bring IKEA to your home



CONCEPT DESIGN

UNITED KINGDOM



61, LONGFELLOW CRESCENT, OLDHAM , OL14QN . UNITED KINGDOM
toobdesign@gmail.com | +44 740 5333 762

CAMBODIA



NO 1 PRACHCHAS VILLAGE VIHEARSOUR COMMUNE,KSACH
KANDAL DISTRICT KANDAL PROVINCE ,CAMBODIA
toobhubcambodia@gmail.com | +855 967 437 371

SRI LANKA



310/4/1 WEERA MAWATHA, BOKUNDARA, SRILANKA 10300
toobdesign@gmail.com | +94 773 586 106